

# County of San Diego Assessor Parcel Maintenance Plans

## Current Status and Future Plans



Eric Culp  
Mapping Supervisor  
Assessor Mapping Division  
[Eric.Culp@sdcounty.ca.gov](mailto:Eric.Culp@sdcounty.ca.gov)



# Agenda

- Project Background
  - Strategic Plan
  - Reducing Redundancy
  - Increasing Timeliness
- As-Is Environment
  - SanGIS
  - Assessor...and the Assessor Parcel Map (APM)
- Current Project Status
- To-Be...?
- Q and A



# Project Background - GeoSD

## 2014-2016 CoSD Geospatial Strategy Document (GeoSD)

### Functional Threading Chart and Benefits

Goals/Obj 2 3 Take ownership and the responsibility of day forward updates of the parcel layer (which currently resides with SanGIS) (Goal 2 and 6).  
 Objective ID **11**  
 Description



There are redundant efforts to maintain both a CAD based tax parcel map and a GIS based tax parcel map. By moving towards a GIS tax parcel map in the ARCC office, this effort will save money and improve the timeliness of the information that is in the land base and tax parcels.

Goals/Obj 6 5 Convert the Assessor's nearly 30,000 parcel maps from raster and AutoCAD maps to GIS maps. (Goal 6)  
 Objective ID **32**  
 Description



Objective will improve the ARCC cadastral tax map product by converting thousands of unique maps into a single parcel fabric that is GIS data. Overall ease of maintenance of the parcels books will be improved.

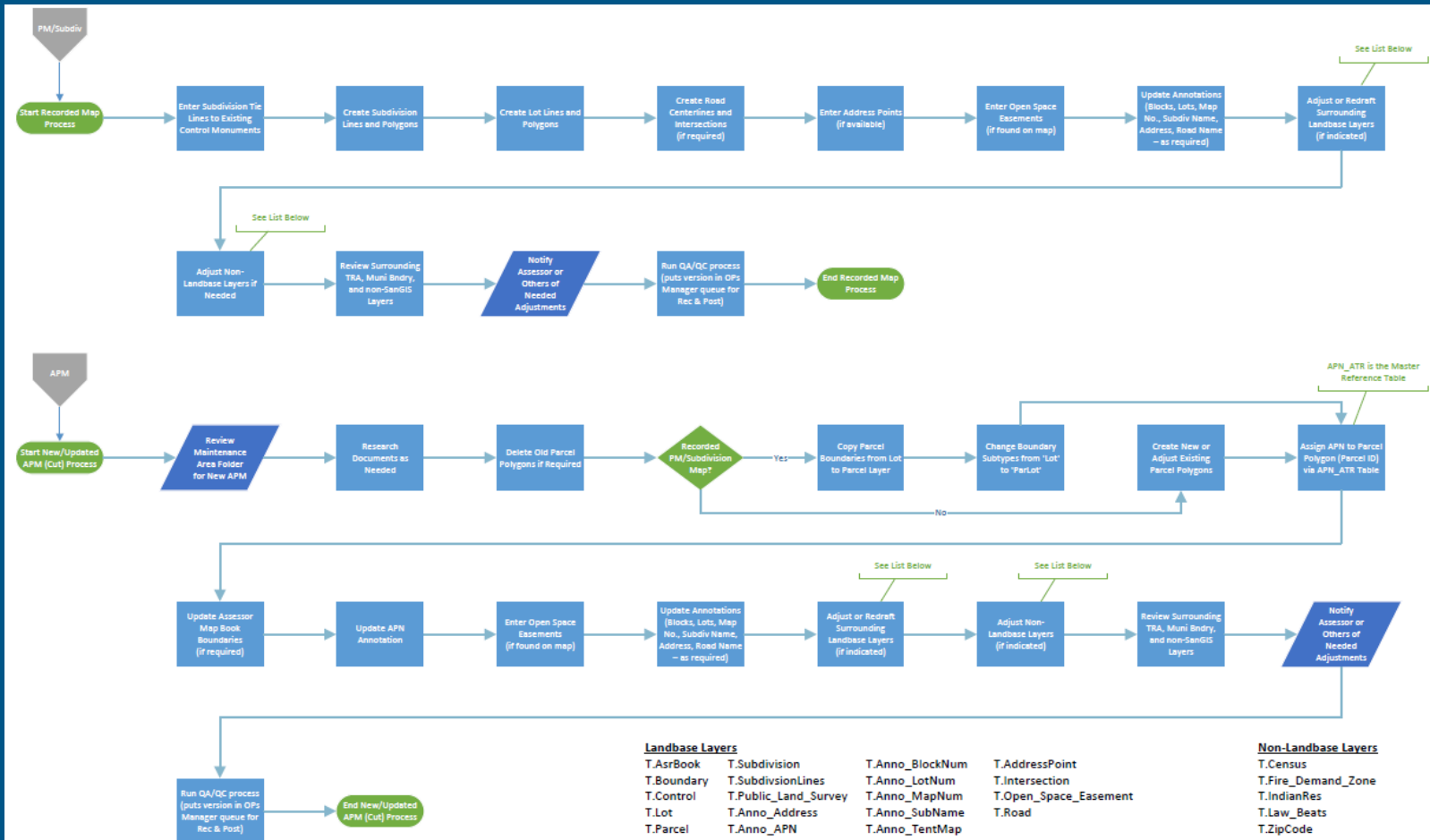


# Project Background – Redundant Workflows

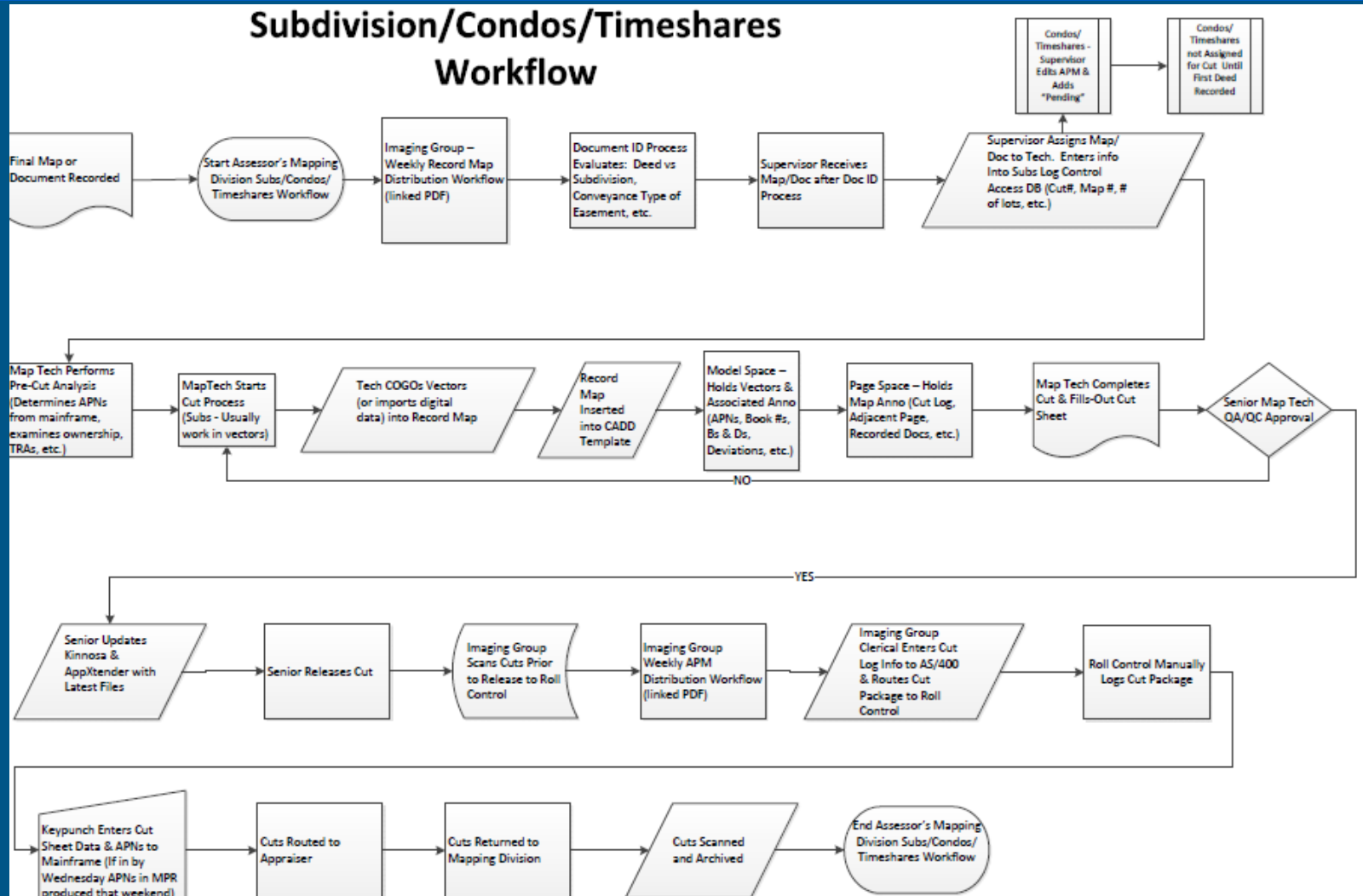
- Significant Areas of Workflow Overlap Exist
  - Subdivisions
  - Parcels
  - Segregations (Splits)
- Also Unique Aspect to Each Agencies Workflows
  - Doc ID
  - Creating APMs
  - 20+ Other Layers Maintained as Part of Landbase



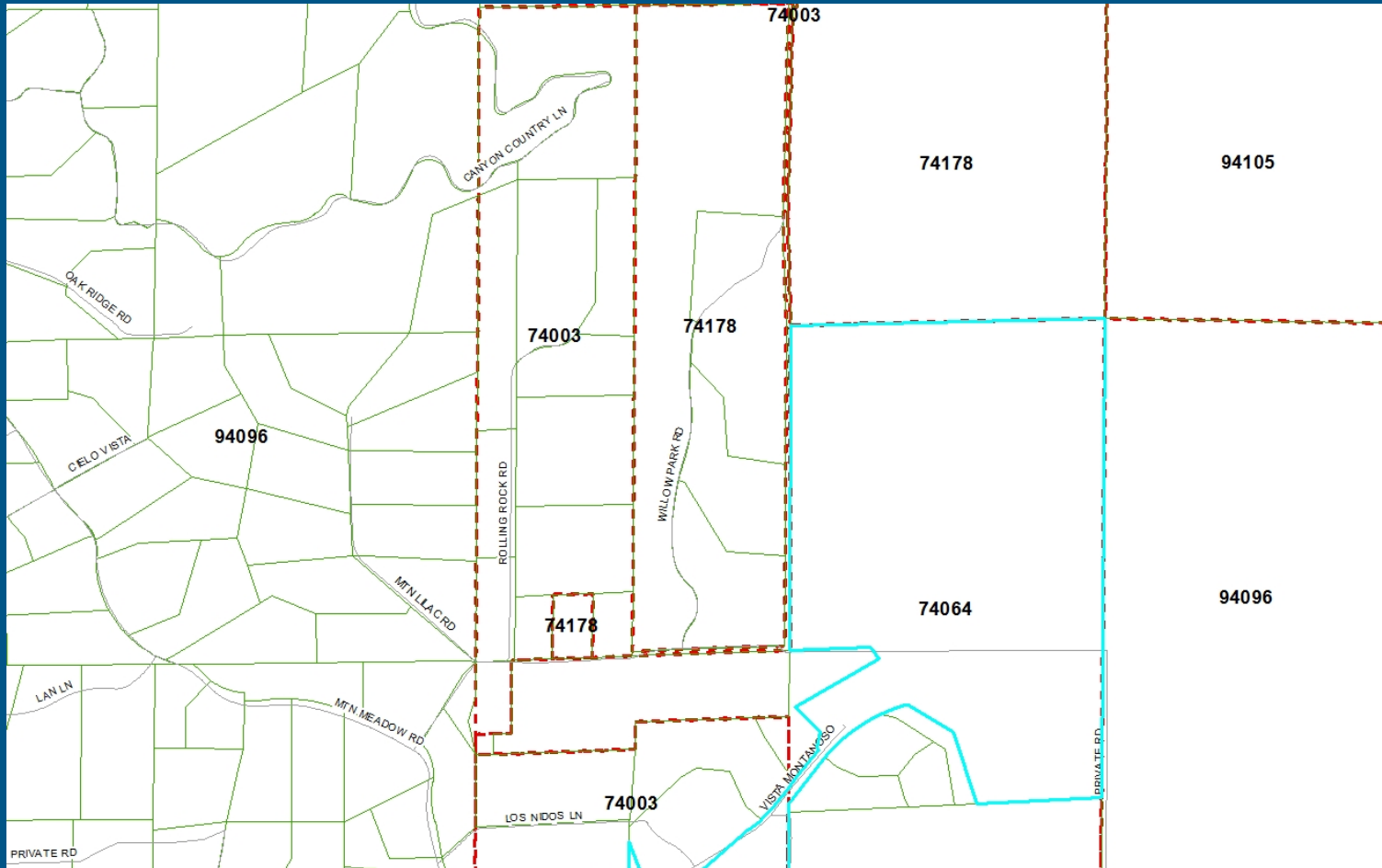
# As-Is...SanGIS “Cut” Workflow



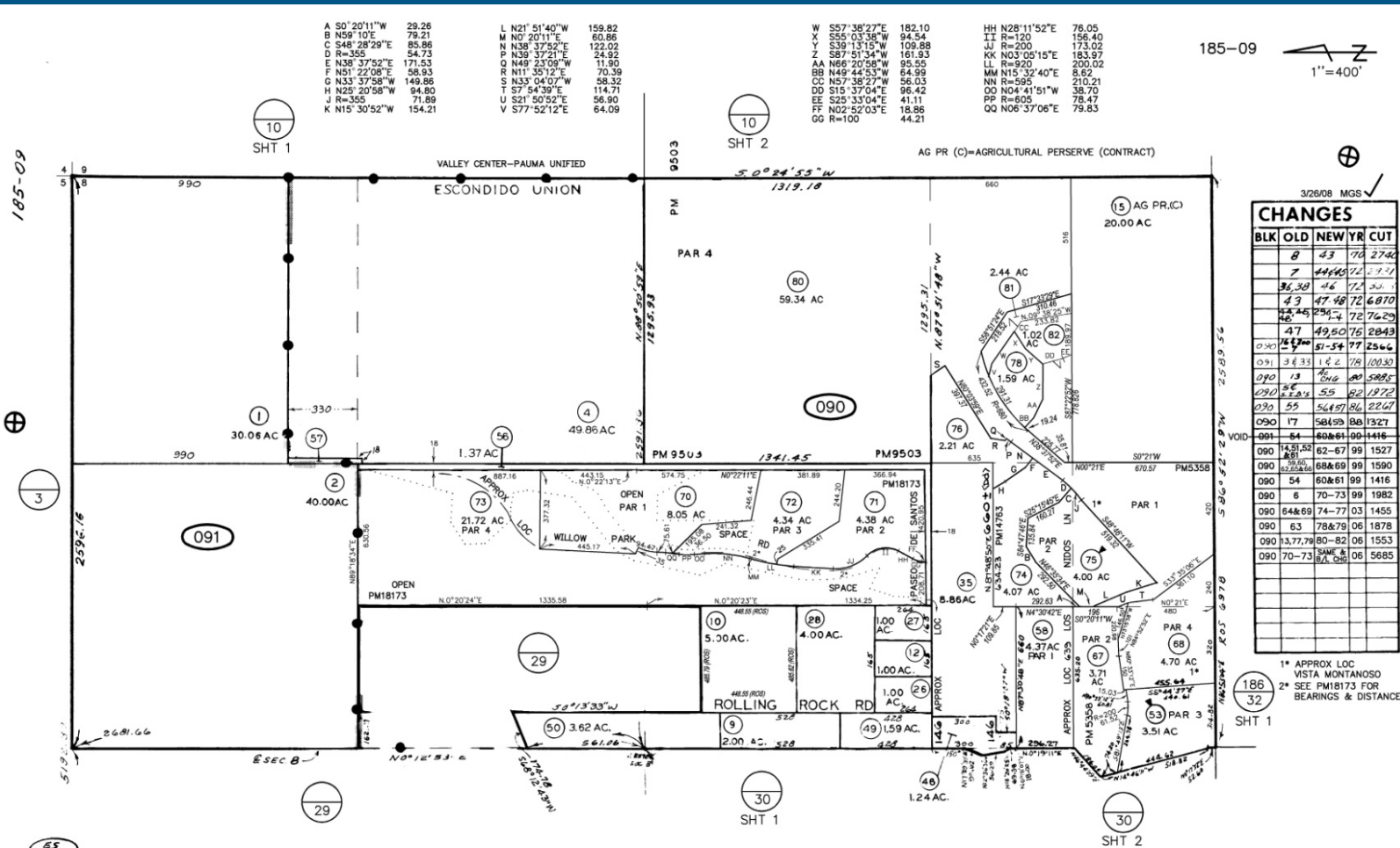
# As-Is...Assessor "Cut" Workflow



# As-Is...SanGIS Parcels



# As-Is..The Assessor Parcel Map



55-61970  
SAN DIEGO COUNTY  
ASSESSOR'S MAP  
BOOK 185 PAGE 09

THIS MAP WAS PREPARED FOR ASSESSMENT PURPOSES ONLY. NO LIABILITY IS ASSUMED FOR THE ACCURACY OF THE DATA SHOWN. ASSESSOR'S PARCELS MAY NOT COMPLY WITH LOCAL SUBDIVISION OR BUILDING ORDINANCES.

SEC 8-T11S-R2W  
ROS 6978, 19933





# So, What is the Project?

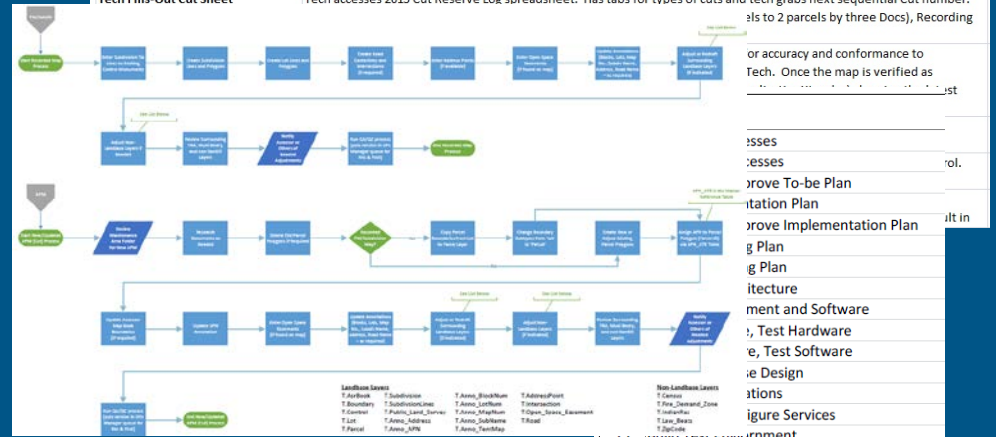
- Eliminate and/or Reduce Duplicate Workflows
- Increase Timeliness of Data
- Create Assessor Parcel Maps
- Allow for Integration with IPTS



# Current Project Status

- As-Is Processes are Mapped
  - Changes to geography
  - Data flows
  - Paper flows
- Outreach to Other Counties
- Draft of To-Be Process - End of November

Segregation Workflows	
Stages	Notes
Receive Doc copies and input Doc to Segs Log Control	Supervisor receives Docs from Imaging Group. Adds document to Segs Log Control spreadsheet (2015 ROLL WORK.xlsm). Info entered includes: Doc Number, Doc Type (Seg Request, etc.), Date Received, APN(s), Tech Assigned, Date Assigned, etc. Docs stay in Supervisor's office until assigned to Tech via Outlook Task.
Doc Assigned to Tech	Tech grabs the hard-copy document work package
Tech Performs Pre-Cut Analysis	Examine APNs, correct ownership, TRA boundaries, and if a Cut is even required. If TRA issues are found, the Doc is forwarded to TRA for research/corrections and then returned to Tech.
Tech Creates/Edits CAD drawing	Tech creates/edits CAD drawing. Accesses mainframe to view latest APNs and, based on this, assign new APNs. Because of 99 limit, sometime they assign new Block and APN (Supervisors may occasionally assign "tentative" APNs). In CAD, vectors are created/edited first along with associated annotations like bearings & distances, Parcel #s, Book #s, etc. into Model Space. Tech then creates/edits map annotations like adjacent page, Bearing & Distance Logs, Cut Log, etc. into Page Space. Note: When APM source is raster, it stays as raster. Most Subs are done as vectors.
Tech Fills-Out Cut Sheet	Tech accesses 2015 Cut Reserve Log spreadsheet. Has tabs for types of cuts and tech grabs next sequential Cut number. (1st to 2 parcels by three Docs), Recording



Task ID	Task Description
16	Create Test Database
17	Systems Applications, Database, Processes
18	Install Applications on Assessor Workstations
19	Complete Training for Assessor and SanGIS
20	User Testing of Applications and Processes
21	Create/Update Standards Documents
22	Create/Update Process Documents
23	Create Memorandum of Understanding
24	MOU Review and Approval
25	Communicate Transition Plan
26	Go Live with Assessor Maintained Parcels



# To-Be Thoughts - Current Thinking

- Variety of Solution Paths in Practice
- Less a Migration...More an Integration and Augmentation Effort
- It's a Process not an Event



# Questions?

*Thank You!*

