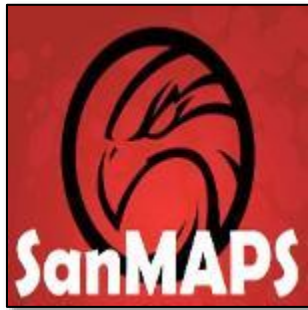


San Diego Multiple Agency Public Safety Regional User Group



SanMAPS is a **1)** a GIS data library, housed in Esri's ArcGIS Online, **2)** the public safety responders, emergency managers and GIS support staff, and **3)** apps for use by those supporting regional public safety and emergency managers. SanMAPS is also the shared moniker for purpose built web applications that are directly tied to Common Operating Data Services (CODS). Some examples of this include "SanMAPS-Fire", "SanMAPS-HARM" (hazard analysis), etc.

Mission:

In order for our regional leaders to make informed decisions about matters related to emergency events and disasters, current high quality spatial information is essential. Services accomplish this mission more than any other technology.

Vision:

Our goal is to maintain a capable group of regional professionals that will be able to share, plan, train, and respond to a disaster by using GIS to provide excellent spatial decision support in a time of crisis. By means of Standard Operating Procedures, drills, special software, education, and technological improvements, our group intends to be ready and available to assist in any event requiring spatial situational awareness.

Values:

We seek to simplify and facilitate the exchange of GIS information where appropriate.

Public Safety and Emergency
Management GIS Data
Sharing Library

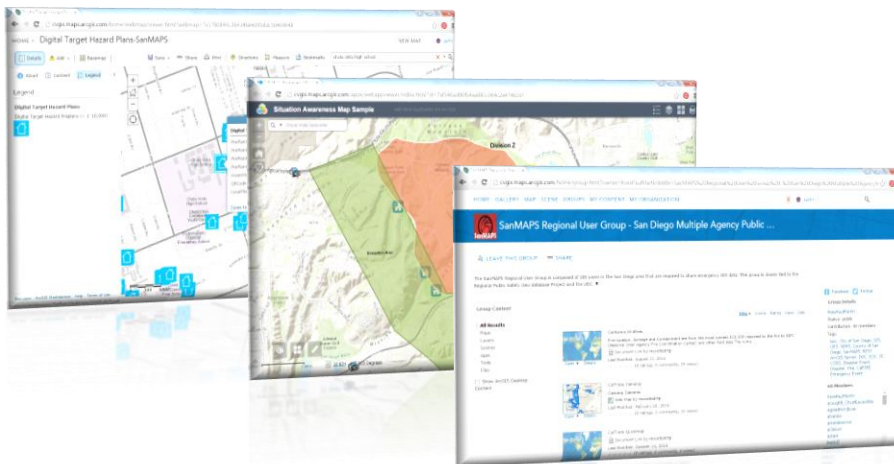
Data shared from federal,
state, county, regional and
local GIS repositories in one
convenient location

Secured using Esri's ArcGIS
Online's (AGOL) robust
identity management and
sharing capabilities

Quickly and easily mash-up
maps and presentations
with the AGOL platform

Utilizes existing software
licensing already in place at
most agencies

*The SanMAPS Regional Users
Group is a collaborative effort
of the County and City of San
Diego along with the
Regional Public Safety
Geodatabase Program*



Contact:
Jeff Ledbetter
(619) 691-1614
jledbetter@sdrtp.com