An aerial photograph of a city, likely San Diego, with a semi-transparent 3D model of buildings overlaid. The buildings are represented as white, rectangular blocks of varying heights, showing the urban layout and density. The background shows the actual city landscape with roads, green spaces, and some water bodies.

# SANDAG 3D Regional Basemap

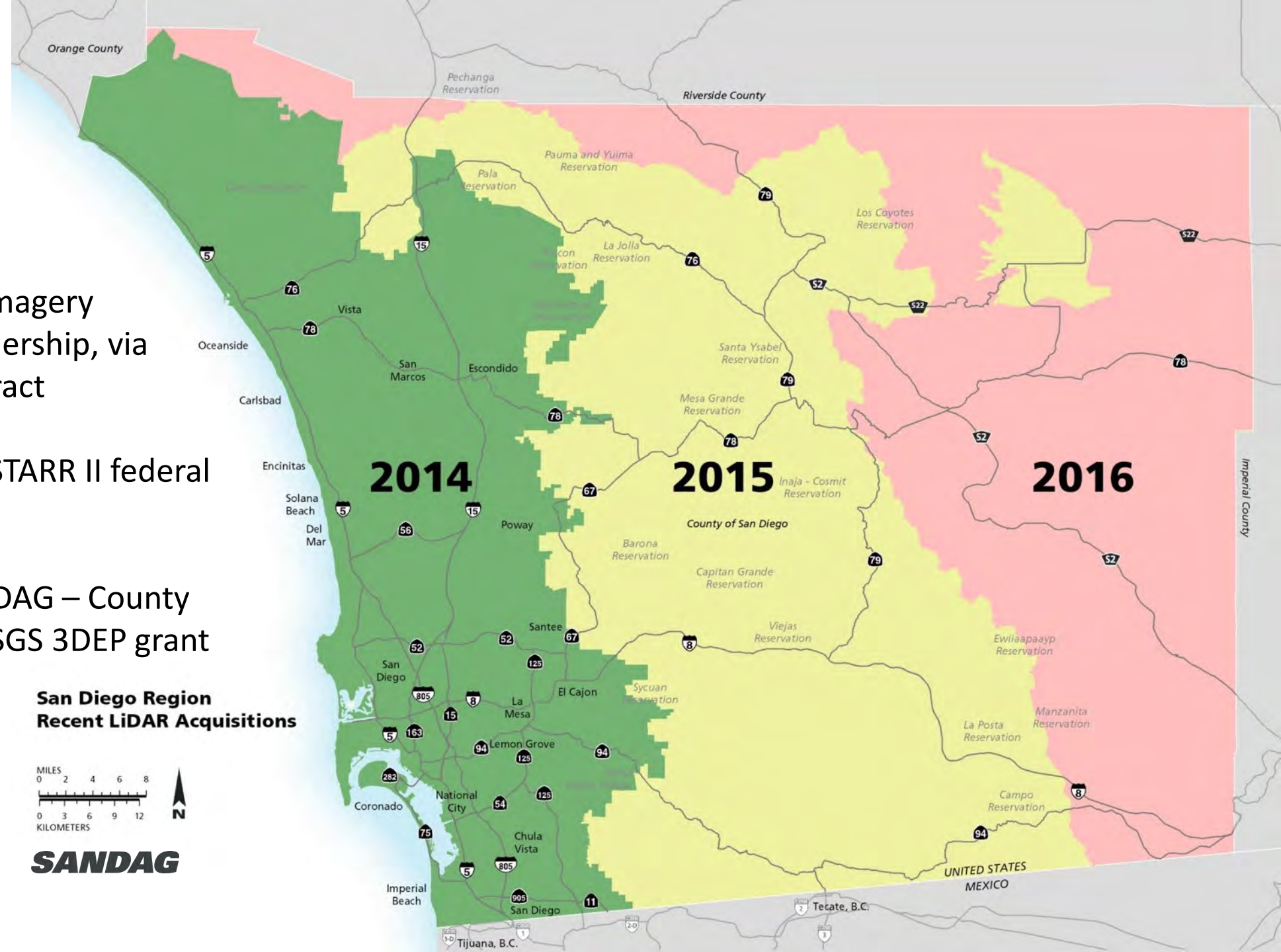
SDRGC May 2021

***SANDAG***



# LiDAR

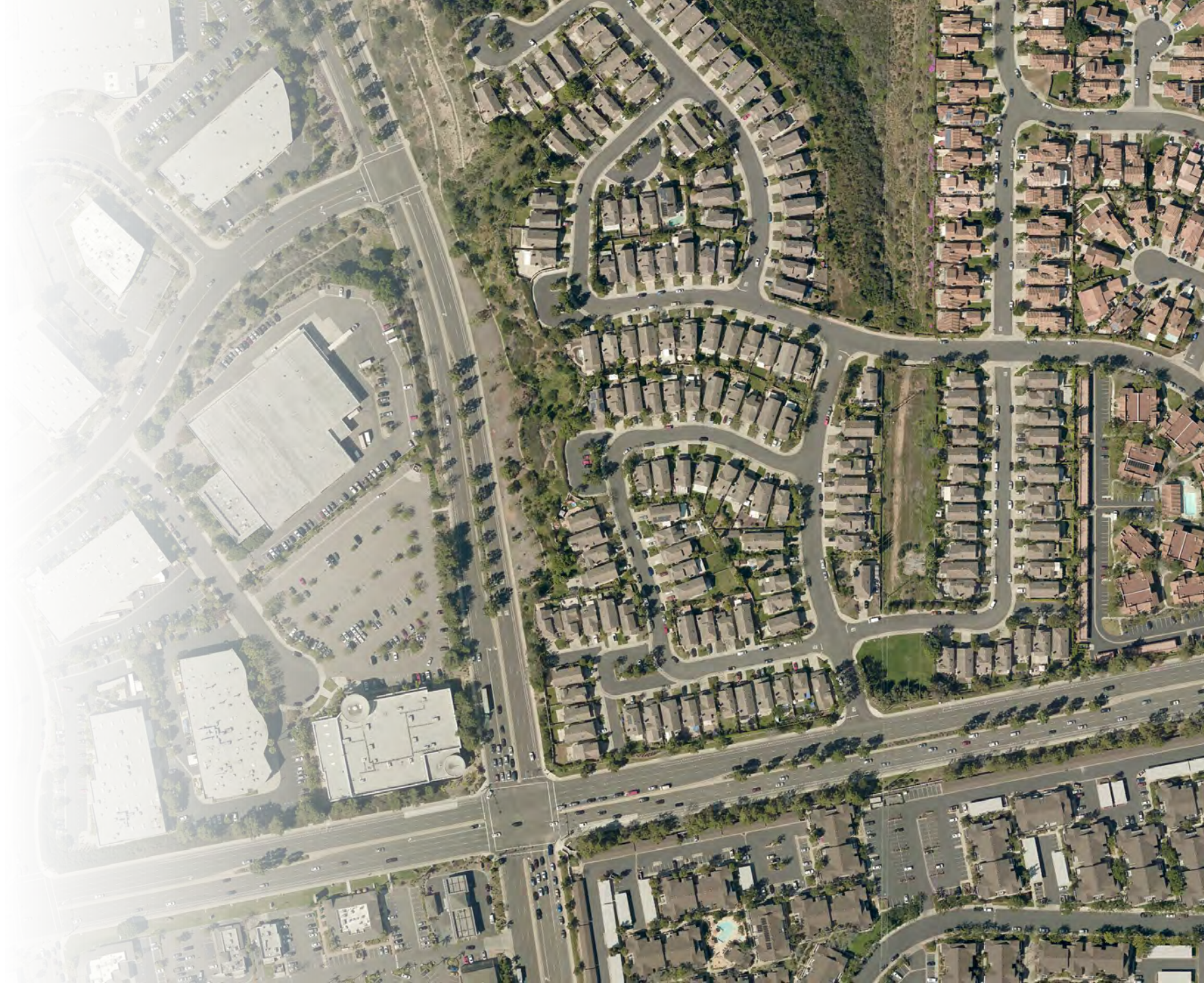
- 2014: Regional Imagery Acquisition Partnership, via USGS GPSC contract
- 2015: FEMA via STARR II federal contract
- 2016/2017: SANDAG – County of San Diego / USGS 3DEP grant





# Imagery

- 2017 Regional Imagery Acquisition Partnership
- Regionwide 9" imagery





# Building Outlines

- SANDAG executed a contract with EagleView/Pictometry to delineate based on 2017 imagery
- Currently using Image Analyst and deep learning modules to produce annual updates based on Nearmap imagery





# 3D Basemap Creation

- SANDAG contracted with Esri to generate 3D basemap from LiDAR, outlines, and tree canopy inputs
- Processing entire region was resource intensive
- Training on ArcGIS 3D Basemap Solution processing and editing





# Next Steps

- Data review and cleanup
- Publicly available in early summer
- Long term: update using new building footprints and future LiDAR acquisitions

